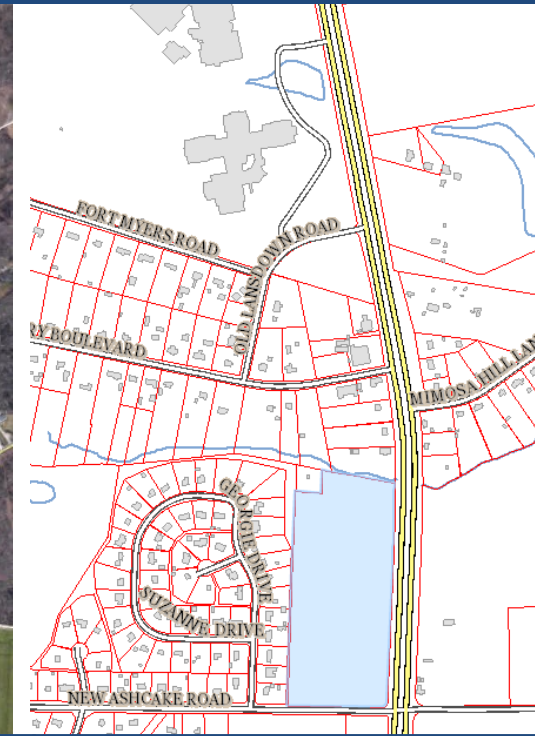


OVER 18 ACRES IN HANOVER
NORTHWEST CORNER OF 301 AND NEW ASHCAKE RD
MECHANICSVILLE, VA

FOR SALE



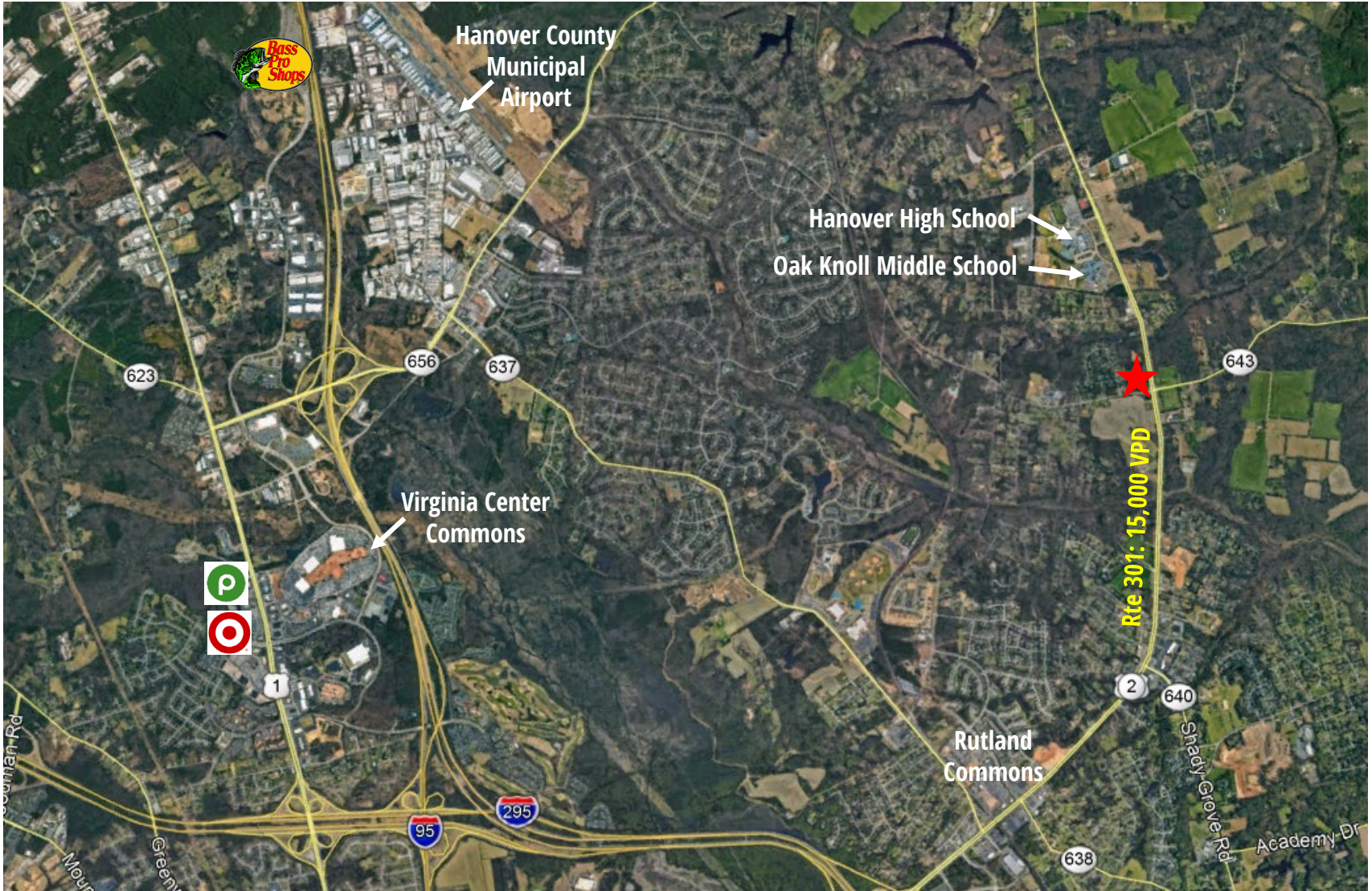
- 18.4 acres / zoned B-2 / utilities nearby
- Near Hanover High School and Oak Knoll Middle School
- Approximately ¼ mile of frontage on Rte 301 (Chamberlayne Rd)

\$3,680,000 for 18.4 acres
\$250,000/acre if subdivided

FOR MORE INFORMATION, PLEASE CONTACT:

Nathan Shor | 804.539.7404 (m) | 804.320.7600 (o) | nshor@slnusbaum.com

S.L. Nusbaum Realty Co. | 9211 Forest Hill Ave | Suite 110 | Richmond, VA 23235 | 804.320.7600 | slnusbaum.com



FOR MORE INFORMATION, PLEASE CONTACT:

Nathan Shor | 804.539.7404 (m) | 804.320.7600 (o) | nshor@slnusbaum.com

S.L. Nusbaum Realty Co. | 9211 Forest Hill Ave | Suite 110 | Richmond, VA 23235 | 804.320.7600 | slnusbaum.com



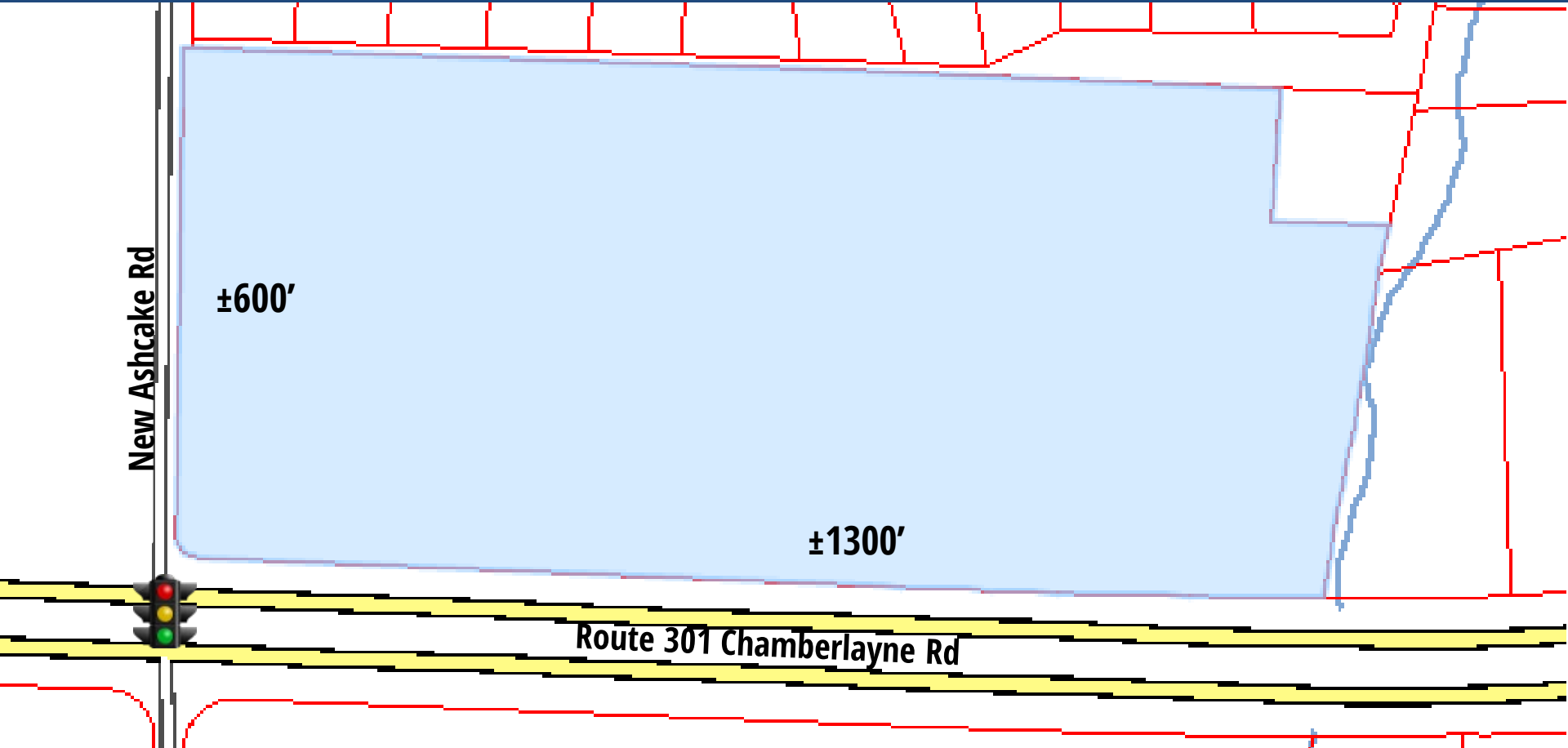
S.L. NUSBAUM Realty Co.

Since 1906.

OVER 18 ACRES IN HANOVER

**NORTHWEST CORNER OF 301 AND NEW ASHCAKE RD
MECHANICSVILLE, VA**

FOR SALE



FOR MORE INFORMATION, PLEASE CONTACT:

Nathan Shor | 804.539.7404 (m) | 804.320.7600 (o) | nshor@slnusbaum.com

S.L. Nusbaum Realty Co. | 9211 Forest Hill Ave | Suite 110 | Richmond, VA 23235 | 804.320.7600 | slnusbaum.com

No warranty or representation, expressed or implied, is made to the accuracy or completeness of the information contained herein, and same is submitted subject to errors, omissions, change of price, rental or other conditions, withdrawal without notice, and to any special listing conditions imposed by the property owner(s). As applicable, we make no representation as to the condition of the property (or properties) in question.